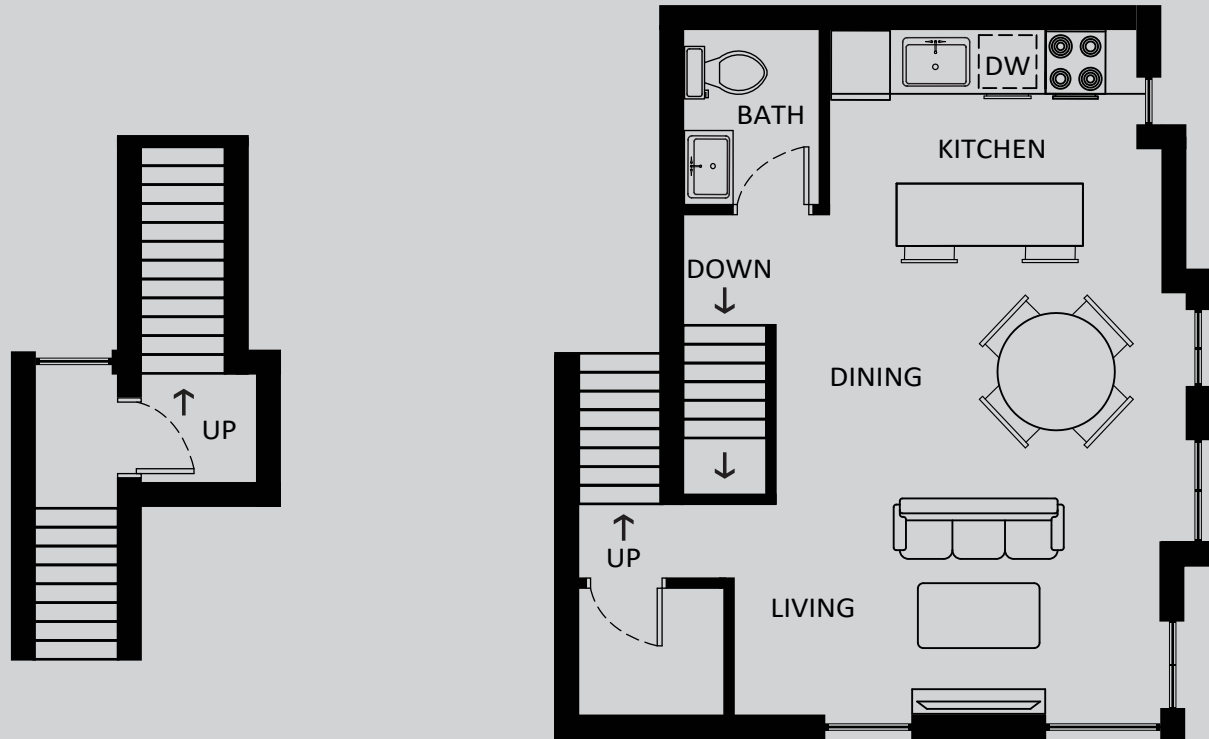


THE TOWNS AT
**YORK MILLS
& LESLIE**

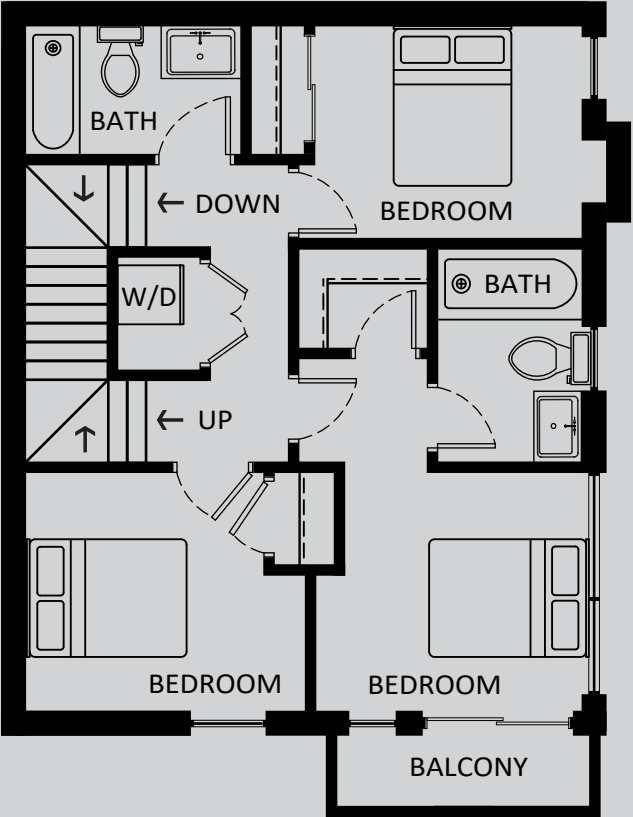
750 York Mills Road, North York

THREE BEDROOM TOWNHOME - MODEL 3G
Approximately 1,374 sq. ft.

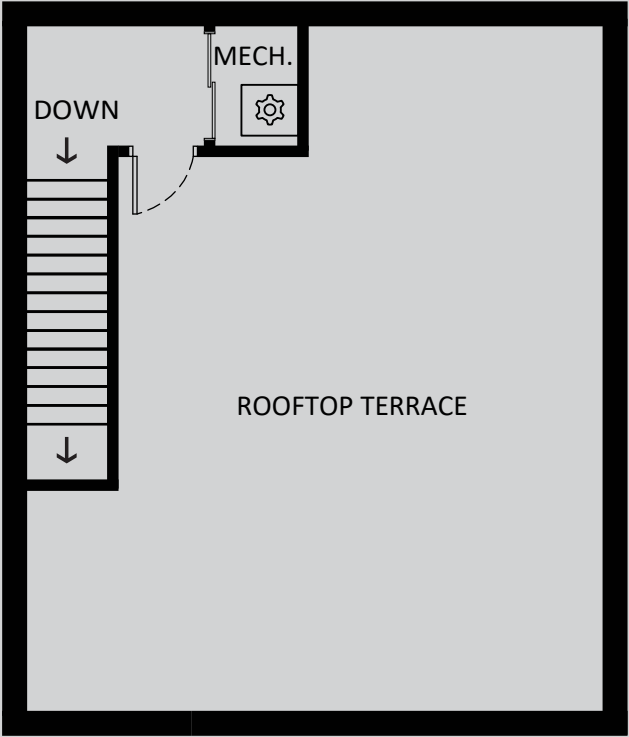


GROUND FLOOR

SECOND FLOOR



THIRD FLOOR



ROOFTOP

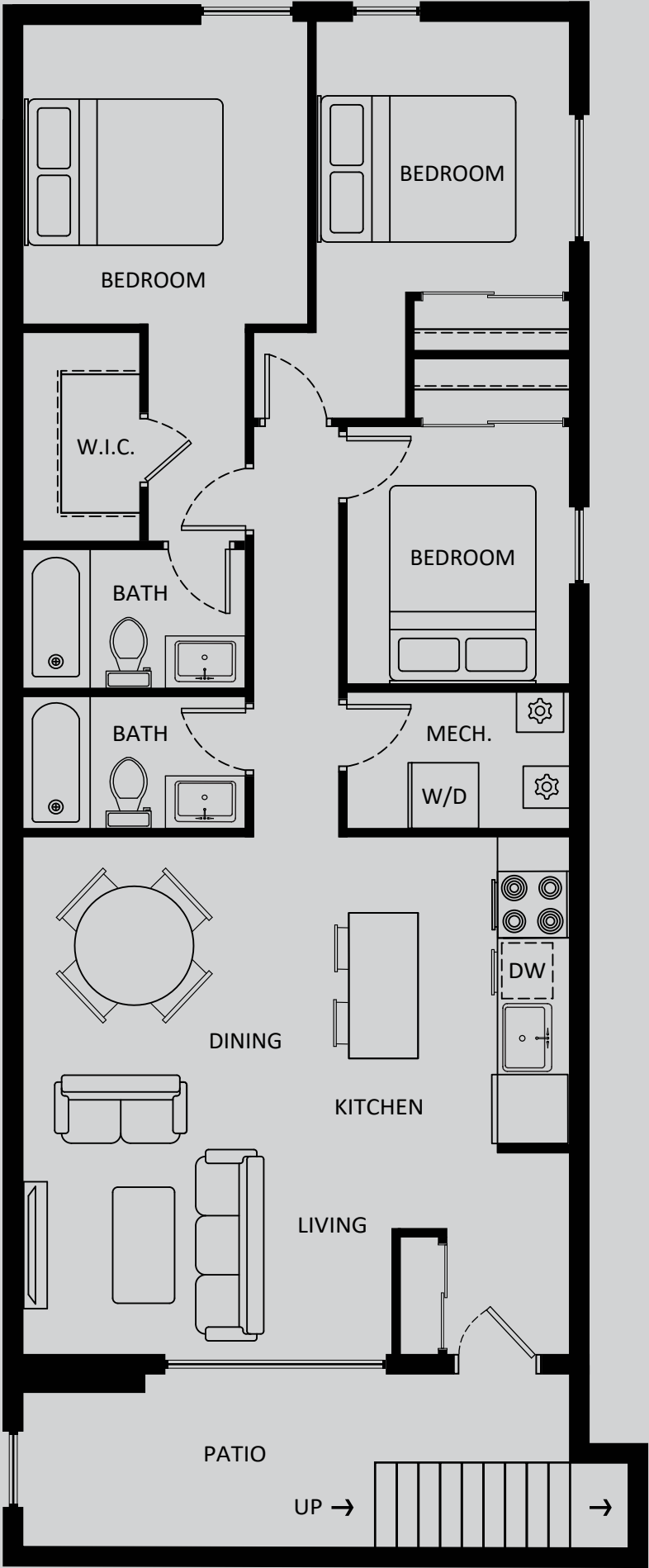


These floor plans are representative only. All dimensions are approximate.

THE TOWNS AT
**YORK MILLS
& LESLIE**

750 York Mills Road, North York

THREE BEDROOM TOWNHOME - BLOCK A2 & B1 - MODEL 3A
Approximately 1,263 sq. ft.

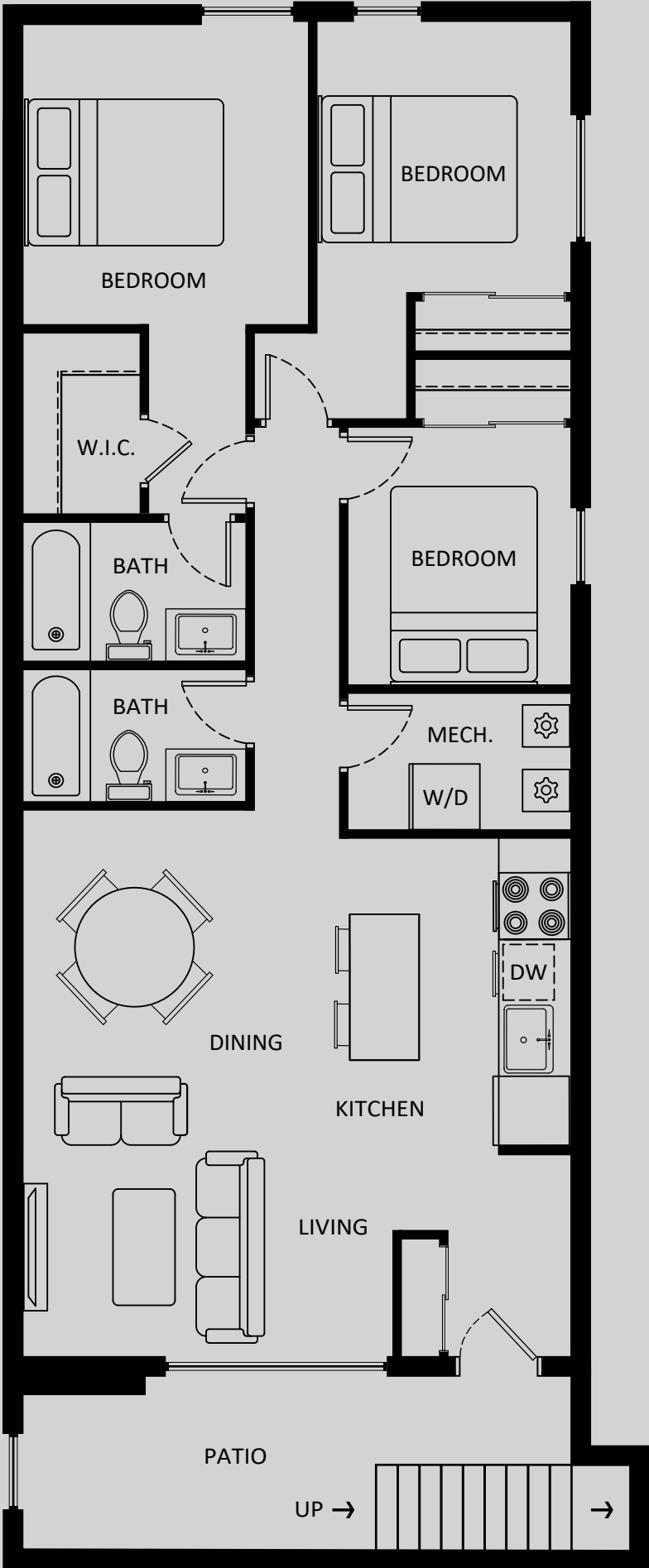


These floor plans are representative only. All dimensions are approximate.

THE TOWNS AT
**YORK MILLS
& LESLIE**

750 York Mills Road, North York

THREE BEDROOM TOWNHOME - BLOCK A1 - MODEL 3A
Approximately 1,263 sq. ft.

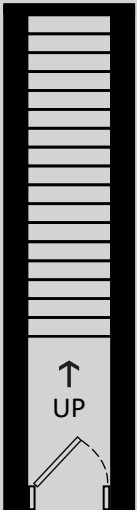


These floor plans are representative only. All dimensions are approximate.

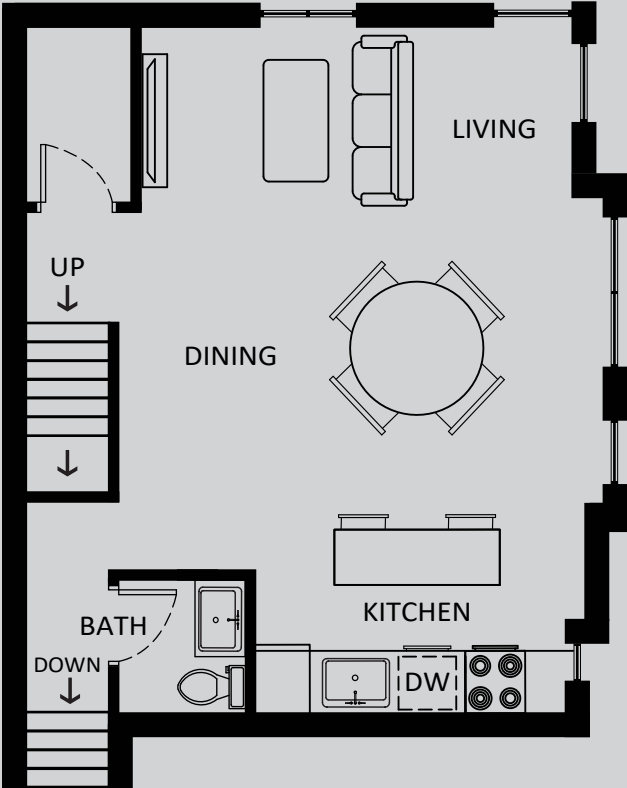
THE TOWNS AT
**YORK MILLS
& LESLIE**

750 York Mills Road, North York

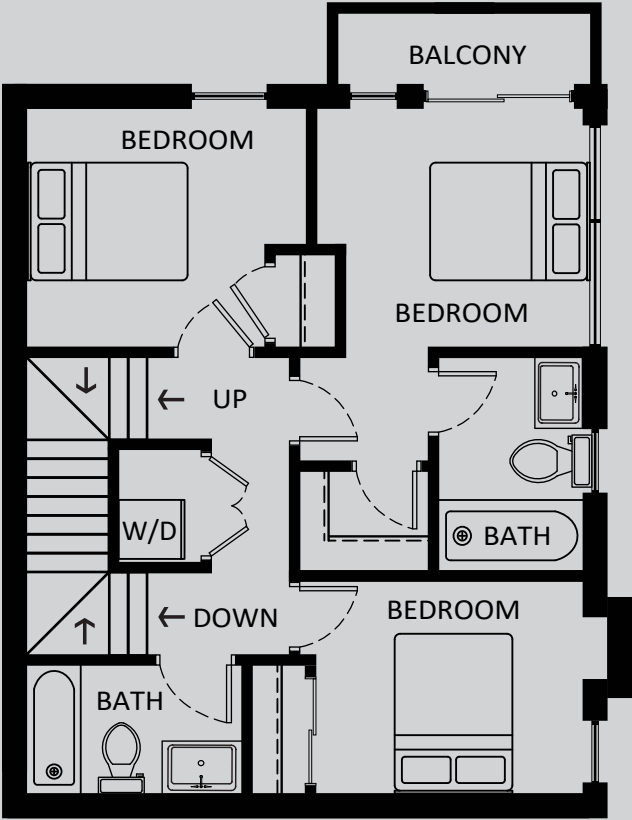
THREE BEDROOM TOWNHOME - MODEL 3F
Approximately 1,480 sq. ft.



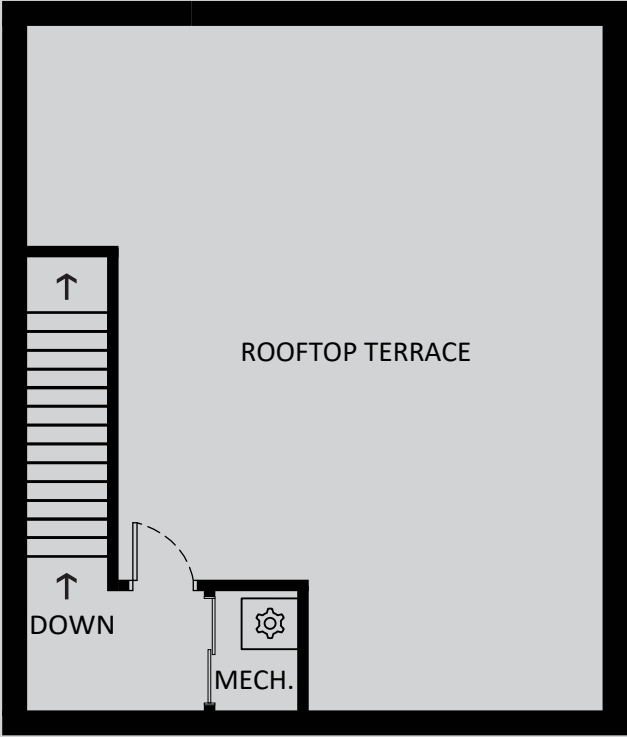
GROUND FLOOR



SECOND FLOOR



THIRD FLOOR



ROOFTOP

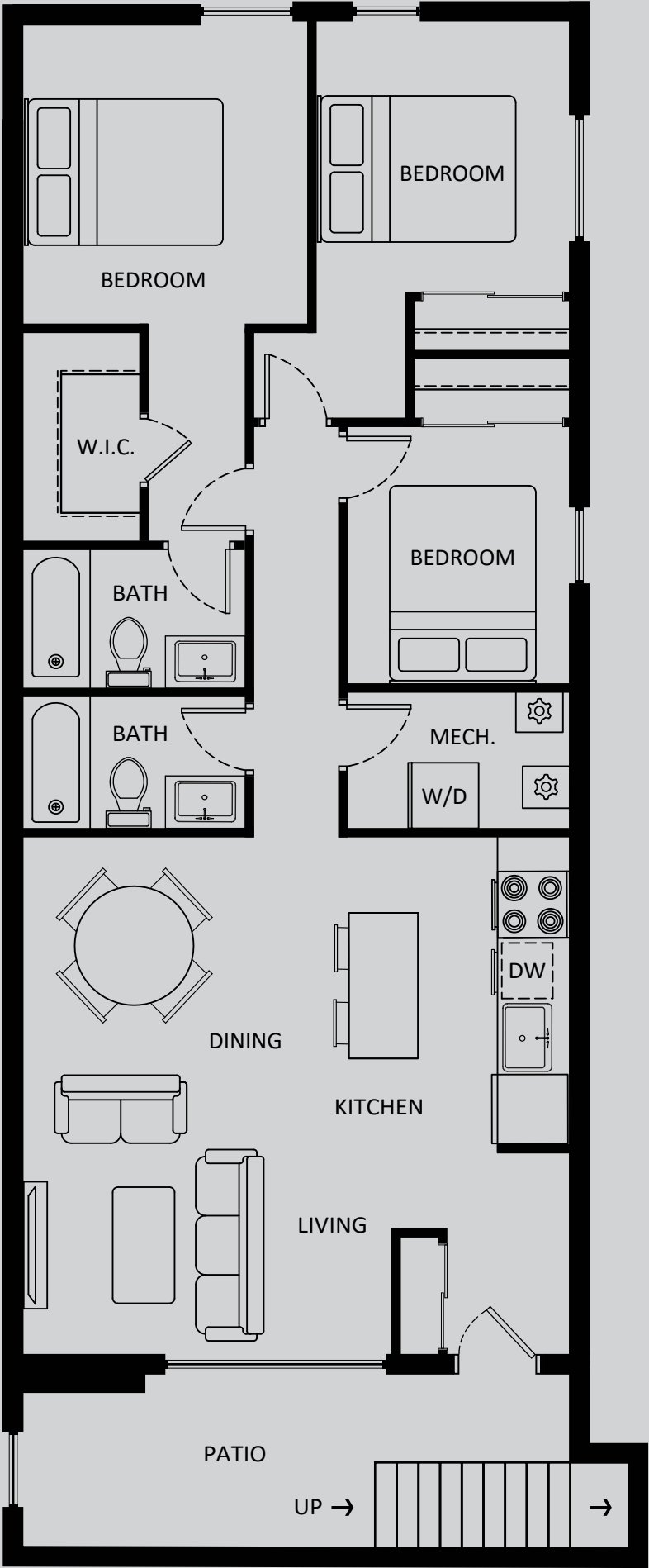


These floor plans are representative only. All dimensions are approximate.

THE TOWNS AT
**YORK MILLS
& LESLIE**

750 York Mills Road, North York

THREE BEDROOM TOWNHOME - BLOCK B2 - MODEL 3A
Approximately 1,263 sq. ft.



THE TOWNS AT
**YORK MILLS
& LESLIE**

750 York Mills Road, North York

THREE BEDROOM TOWNHOME - MODEL 3E
Approximately 1,113 sq. ft.

